

Once Upon a Library

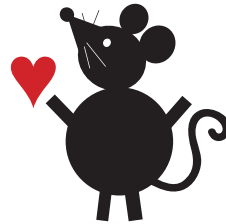
Whitby Public Library Annual Report 2008

WHITBY
PUBLIC LIBRARY



doorway to discovery

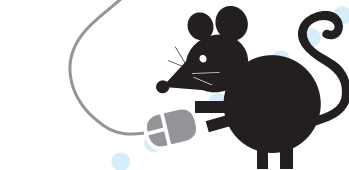
A Message from the Chair Whitby Public Library Board



Whitby **loves** its Library! 2008 was our busiest year ever, with well **over 1 million items** checked out at our three branches. We signed up nearly 9,000 new library members, raising the total number of active library memberships to 62,000. The Library touches the lives of thousands of residents every year as they **learn, connect, and enjoy** all that it has to offer.

Some 2008 highlights:

- In response to community demand, the Central Library expanded its Sunday openings and welcomed more than **25,000 Sunday visitors.**
- 1000+ fun and educational **programs and outreach activities** reached an audience of over 35,000 people of all ages.
- In an effort to help Whitby job-seekers, businesses and entrepreneurs weather the current economic downturn, we concentrated on improving the Library's **business resources and services.**
- Our community demographics have changed and we expanded our collections in a **variety of languages** and developed a film program with Community Development Council of Durham to **learn** about and bring together different cultures.
- The Library provides a remarkable depth and range of electronic services suitable for **today's electronic world.** Our electronic resources were used a record 600,000+ times during the year. In 2008 we:
 - added a user-friendly calendar of Library programs to our website
 - continued to expand our electronic databases to serve a variety of users
 - added 360 Search, making searching online databases **easier and faster**



Reference questions answered
115,348

Public internet uses
133,602

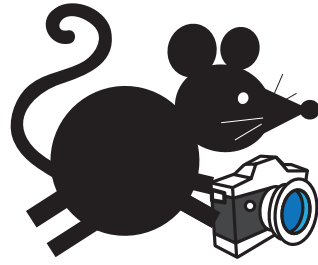
Visits to our branches
581,256

Visits to library website
198,044

Materials Checked Out
1,182,918

A Year in the Life of the Library



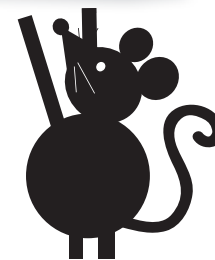


- The Whitby Archives celebrated its 40th anniversary in June. Through a private donation, **historical photographs** are now being digitized in the Archives. By year-end, just over 2,400 Whitby images were available to students, genealogists and researchers the world over at www.ourontario.ca/Whitby.
- Work on the development of a **new and improved library branch** to serve the Brooklin community continued throughout the year. JoAnne Alexander and Beatrice the Mouse produced a CD of children's music and performed at events all over town to the delight of young and old in support of the new branch's children's services and programs.
- Library staff reached out to the community at many events through the year – Destination Success, Youth Fair, Grand Day, Heritage Day, Doors Open, Harvest Festival. Look for a Library booth at most community events and **discover all that your library has to offer!**
- To establish directions for the next 5 years, the Library Board developed a new strategic plan that will ensure the Library continues to meet the ongoing needs of the people of Whitby.

On behalf of the Board, I offer my thanks to the creative, energetic and dedicated **Library staff** who continue to deliver the best possible library service to the residents of Whitby. I would also like to acknowledge the efforts of the **Library Board** who made 2008 such a **successful year**. We are very grateful for the support of our many **sponsors, friends and community partners**.

The majority of the Library's funding comes from the Town of Whitby, and we remain grateful to **Council** for their **ongoing commitment** to library services, which contribute to making Whitby a stronger, sustainable and safe community.

Jane Hilton
Chair, Whitby Public Library Board



Financial Report

Year ended December 31, 2008.

Excerpted from audited Financial Statements.

Revenues

Town of Whitby	\$4,234,707
Province of Ontario	\$99,982
Fines, Copying & Miscellaneous	\$214,314
Whitby Public Library Archives Fund (Digitization Project)	\$36,000

Expenses

Library Materials and Supplies	\$490,828
Capital Expenditures and Technology	\$217,041
Staff and Benefits	\$3,087,416
Facilities and Utilities	\$531,953
Administration and Supplies	\$243,516
Whitby Public Library Archives Fund (Digitization Project)	\$35,608

Branch Locations

CENTRAL LIBRARY

405 Dundas Street West
Whitby, L1N 6A1
905-668-6531

ROSSLAND BRANCH

701 Rossland Road East
Whitby, L1N 8Y9
905-668-1886

BROOKLIN BRANCH

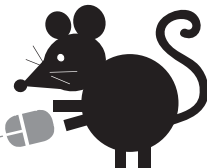
150 Winchester Road West (Temporary Location)
Brooklin, L1M 1B3
905-655-3191

WHITBY ARCHIVES

405 Dundas Street West
Whitby, L1N 6A1
905-668-6531 extension 2022

VIRTUAL BRANCH

www.whitbylibrary.on.ca



Board Members

Jane Hilton, Chair

John Duffy, Vice-Chair

Councillor Sue Pitchforth

Barry Hum

Myles Kesten

Claude Lavoie

Barbara Matthews

Pravin Patel

Gary Rose

Scott Templeton

Management Staff

Ian Ross, Chief Executive Officer

Rhonda Jessup, Public Services Manager

Elaine Yatulis Dobbin, Manager Technical Services & Systems Support

Michelle Frenette, Support Services Manager

Pat Khashmanian, Support Services Assistant

*Whitby's Doorway to Discovery: enriching and advancing
our community by providing equitable access to information,
ideas, inspiration and the joy of reading.*

The End

